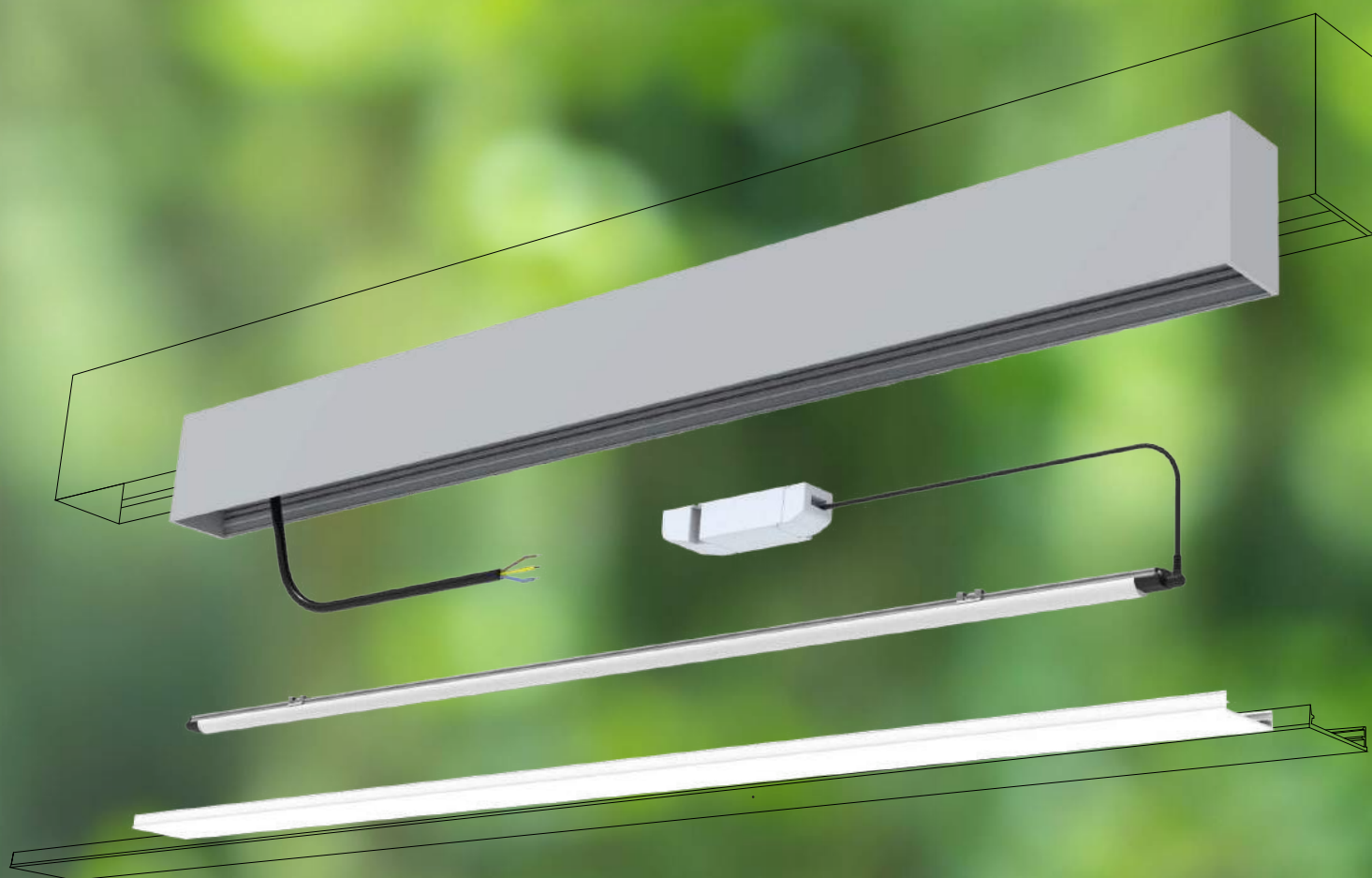
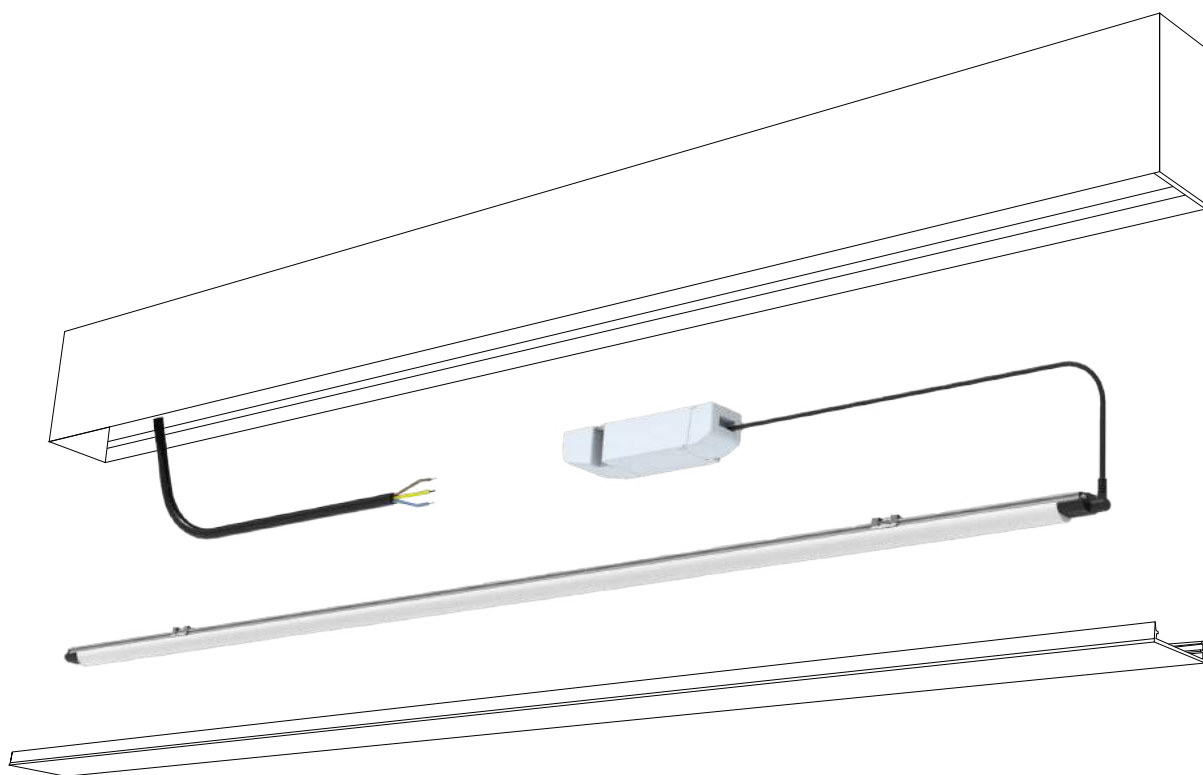


DATA SHEET - RE-FIT LINEAR PROFILE LUMINAIRES



DATASHEET - RE-FIT LINEAR PROFILE LUMINAIRES

RE-FIT SET



YOUR INNOVATIVE SOLUTION

Due to the phase-out of conventional light sources (T5, T8) at the end of August 2023, a solution was developed that enables the retrofitting and continued use of existing luminaires.

We offer Re-Fit Sets with the latest LED technology and guarantee simple and safe handling.

Your benefits at a glance:

- High efficiency lighting solution up to 180 lm/W
- Energy savings up to 70% compared to a fluorescent tube
- Energy savings up to 30% compared to an LED tube
- Directed light without further losses (symmetrical 120° beam angle)
- Ongoing use of the existing luminaire housing - no structural modifications required
- Fully certified luminaires (CE, ENEC, UL, etc.)
- Excellent light quality with CRI 92
- Flicker-free illumination
- Plug&Play solution - contains light source, operating unit, cabling and magnetic holders
- "Made in Europe" - in accordance with relevant environmental and sustainability regulations (carbon footprint)
- Eligible for funding >120 lm/W, CRI >80 and ENEC certification fulfilled
- DALI on request

DATASHEET - RE-FIT LINEAR PROFILE LUMINAIRES

TECHNICAL DATA | ORDERING INFORMATION

Art. No.	Type	Length	Typically replaces	Luminous flux [lm]*	Power incl. driver [W]	Efficiency [lm/W]	CRI
4000K							
91450723	LED LE516 NW 4L14-XHD2 24V/40mA COF8DY (2/2)	516mm	-	570	3.8	149	92
tbd.	LED LE516 NW 4L14-XHD2 24V/50mA COF8DY (2/2)	516mm	-	690	4.5	154	92
tbd.	LED LE516 NW 4L14-XHD2 24V/60mA COF8DY (2/2)	516mm	T5 HE (ECO), 550mm, 14W (13W)	820	5.6	146	92
tbd.	LED LE516 NW 4L14-XHD2 24V/70mA COF8DY (2/2)	516mm	-	910	6.1	150	92
91450740	LED LE516 NW 4L14-XHD2 24V/80mA COF8DY (2/2)	516mm	T5 HO (ECO), 550mm, 24W (20W)	1090	7.2	152	92
tbd.	LED LE516 NW 4L14-XHD2 24V/100mA COF8DY (2/2)	516mm	-	1320	9.0	147	92
tbd.	LED LE516 NW 4L14-XHD2 24V/120mA COF8DY (2/2)	516mm	-	1600	10.8	148	92
tbd.	LED LE562 NW 4L14-XHD2 24V/40mA COF8DY (3/1)	562mm	-	620	4.2	149	92
tbd.	LED LE562 NW 4L14-XHD2 24V/50mA COF8DY (3/1)	562mm	-	760	4.9	154	92
tbd.	LED LE562 NW 4L14-XHD2 24V/60mA COF8DY (3/1)	562mm	T8, 600mm, 18W	900	6.2	146	92
91450701	LED LE562 NW 4L14-XHD2 24V/70mA COF8DY (3/1)	562mm	-	1000	6.6	151	92
91450615	LED LE562 NW 4L14-XHD2 24V/80mA COF8DY (3/1)	562mm	-	1190	7.9	151	92
91450627	LED LE562 NW 4L14-XHD2 24V/100mA COF8DY (3/1)	562mm	-	1460	9.9	148	92
91450628	LED LE562 NW 4L14-XHD2 24V/120mA COF8DY (3/1)	562mm	-	1760	11.9	148	92
tbd.	LED LE843 NW 6L14-XHD2 24V/40mA COF8DY (5/1)	843mm	-	960	6.4	150	92
tbd.	LED LE843 NW 6L14-XHD2 24V/50mA COF8DY (5/1)	843mm	T5 HE, 850mm, 21W	1170	7.6	153	92
91450663	LED LE843 NW 6L14-XHD2 24V/60mA COF8DY (5/1)	843mm	-	1400	9.6	147	92
91450671	LED LE843 NW 6L14-XHD2 24V/70mA COF8DY (5/1)	843mm	-	1550	10.2	152	92
91450714	LED LE843 NW 6L14-XHD2 24V/80mA COF8DY (5/1)	843mm	T5 HO, 850mm, 39W	1850	12.1	152	92
91450674	LED LE843 NW 6L14-XHD2 24V/100mA COF8DY (5/1)	843mm	-	2250	15.3	147	92
tbd.	LED LE843 NW 6L14-XHD2 24V/120mA COF8DY (5/1)	843mm	-	2710	18.4	147	92
tbd.	LED LE1030 NW 7L14-XHD2 24V/40mA COF8DY	1030mm	-	1190	7.9	151	92
tbd.	LED LE1030 NW 7L14-XHD2 24V/50mA COF8DY	1030mm	-	1440	9.4	153	92
tbd.	LED LE1030 NW 7L14-XHD2 24V/60mA COF8DY	1030mm	-	1720	11.8	146	92
tbd.	LED LE1030 NW 7L14-XHD2 24V/70mA COF8DY	1030mm	-	1920	12.6	153	92
91450709	LED LE1030 NW 7L14-XHD2 24V/80mA COF8DY	1030mm	-	2280	14.9	153	92
91450635	LED LE1030 NW 7L14-XHD2 24V/100mA COF8DY	1030mm	-	2780	18.9	147	92
91450373	LED LE1030 NW 7L14-XHD2 24V/120mA COF8DY	1030mm	-	3350	23.3	144	92
tbd.	LED LE1124 NW 8L14-XHD2 24V/40mA COF8DY (7/1)	1124mm	-	1300	8.7	150	92
tbd.	LED LE1124 NW 8L14-XHD2 24V/50mA COF8DY (7/1)	1124mm	-	1580	10.3	153	92
tbd.	LED LE1124 NW 8L14-XHD2 24V/60mA COF8DY (7/1)	1124mm	T5 HE, 1150mm, 28W	1890	12.9	146	92
91450700	LED LE1124 NW 8L14-XHD2 24V/70mA COF8DY (7/1)	1124mm	-	2100	13.8	152	92
tbd.	LED LE1124 NW 8L14-XHD2 24V/80mA COF8DY (7/1)	1124mm	-	2500	16.4	152	92
91450724	LED LE1124 NW 8L14-XHD2 24V/100mA COF8DY (7/1)	1124mm	T5 HO, 1150mm, 54W	3040	21.1	144	92
tbd.	LED LE1124 NW 8L14-XHD2 24V/120mA COF8DY (7/1)	1124mm	-	3670	25.5	144	92

Packaging: 12 pieces/carton, 360 pieces./pallet

DATASHEET - RE-FIT LINEAR PROFILE LUMINAIRES

TECHNICAL DATA | ORDERING INFORMATION

Art. No.	Type	Length	Typically replaces	Luminous flux [lm]*	Power incl. driver [W]	Efficiency [lm/W]	CRI
4000K							
tbd.	LED LE1170 NW 8L14-XHD2 24V/40mA COF8DY	1170mm	-	1360	9.0	151	92
tbd.	LED LE1170 NW 8L14-XHD2 24V/50mA COF8DY	1170mm	-	1650	10.8	153	92
91450619	LED LE1170 NW 8L14-XHD2 24V/60mA COF8DY	1170mm	T8, 1200mm, 36W	1970	13.5	146	92
91450614	LED LE1170 NW 8L14-XHD2 24V/70mA COF8DY	1170mm	-	2190	14.4	152	92
91450444	LED LE1170 NW 8L14-XHD2 24V/80mA COF8DY	1170mm	-	2600	17.1	152	92
91450526	LED LE1170 NW 8L14-XHD2 24V/100mA COF8DY	1170mm	-	3180	22.1	144	92
91450418	LED LE1170 NW 8L14-XHD2 24V/120mA COF8DY	1170mm	-	3830	26.7	144	92
tbd.	LED LE1450 NW 10L14-XHD2 24V/40mA COF8DY	1450mm	-	1700	11.2	151	92
tbd.	LED LE1450 NW 10L14-XHD2 24V/50mA COF8DY	1450mm	T5 HE (ECO), 1450mm, 35W (32W)	2060	13.5	153	92
tbd.	LED LE1450 NW 10L14-XHD2 24V/60mA COF8DY	1450mm	-	2460	16.9	146	92
91450622	LED LE1450 NW 10L14-XHD2 24V/70mA COF8DY	1450mm	T5 HO (ECO), 1450mm, 49W (45W)	2740	18.0	152	92
91450423	LED LE1450 NW 10L14-XHD2 24V/80mA COF8DY	1450mm	T8, 1500mm, 58W	3260	21.8	149	92
91450297	LED LE1450 NW 10L14-XHD2 24V/100mA COF8DY	1450mm	T5 HO (ECO), 1450mm, 80W (73W)	3970	27.6	144	92

Packaging: 12 pieces/carton, 360 pieces./pallet

- *Measurement with laboratory power supply
- All typical values for $T_a=25^{\circ}\text{C} \pm 2^{\circ}\text{C}$
- Luminous flux min. value = typ. value - 20%
- Tolerance mechanical dimensions +/- 1mm
- Tolerance electrical data +/- 15%
- Tolerance optical data +/- 15%
- Tolerance min. value CRI +1/-1
- Energy efficiency class (valid for light source): up to 80mA=C, from 100mA=D

TECHNICAL DATA | ORDERING INFORMATION

Art. No.	Type	Length	Typically replaces	Luminous flux [lm]*	Power incl. driver [W]	Efficiency [lm/W]	CRI
3000K							
tbd.	LED LE516 WW 4L14-XHD2 24V/40mA COF8DY (2/2)	516mm	-	550	3.8	144	92
tbd.	LED LE516 WW 4L14-XHD2 24V/50mA COF8DY (2/2)	516mm	-	670	4.5	149	92
tbd.	LED LE516 WW 4L14-XHD2 24V/60mA COF8DY (2/2)	516mm	T5 HE (ECO), 550mm, 14W (13W)	790	5.6	141	92
tbd.	LED LE516 WW 4L14-XHD2 24V/70mA COF8DY (2/2)	516mm	-	890	6.1	147	92
tbd.	LED LE516 WW 4L14-XHD2 24V/80mA COF8DY (2/2)	516mm	T5 HO (ECO), 550mm, 24W (20W)	1050	7.2	146	92
tbd.	LED LE516 WW 4L14-XHD2 24V/100mA COF8DY (2/2)	516mm	-	1280	9.0	142	92
tbd.	LED LE516 WW 4L14-XHD2 24V/120mA COF8DY (2/2)	516mm	-	1550	10.8	144	92
tbd.	LED LE562 WW 4L14-XHD2 24V/40mA COF8DY (3/1)	562mm	-	600	4.2	144	92
tbd.	LED LE562 WW 4L14-XHD2 24V/50mA COF8DY (3/1)	562mm	-	730	4.9	148	92
tbd.	LED LE562 WW 4L14-XHD2 24V/60mA COF8DY (3/1)	562mm	T8, 600mm, 18W	870	6.2	141	92
tbd.	LED LE562 WW 4L14-XHD2 24V/70mA COF8DY (3/1)	562mm	-	970	6.6	146	92
tbd.	LED LE562 WW 4L14-XHD2 24V/80mA COF8DY (3/1)	562mm	-	1160	7.9	147	92
tbd.	LED LE562 WW 4L14-XHD2 24V/100mA COF8DY (3/1)	562mm	-	1410	9.9	143	92
tbd.	LED LE562 WW 4L14-XHD2 24V/120mA COF8DY (3/1)	562mm	-	1700	11.9	143	92

Packaging: 12 pieces/carton, 360 pieces./pallet

DATASHEET - RE-FIT LINEAR PROFILE LUMINAIRES

TECHNICAL DATA | ORDERING INFORMATION

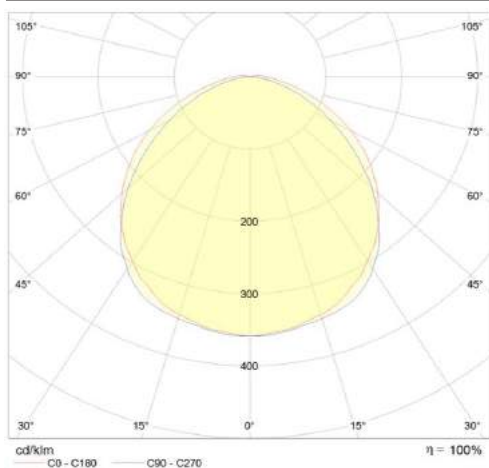
Art. No.	Type	Length	Typically replaces	Luminous flux [lm]*	Power incl. driver [W]	Efficiency [lm/W]	CRI
3000K							
tbd.	LED LE843 WW 6L14-XHD2 24V/40mA COF8DY (5/1)	843mm	-	930	6.4	145	92
tbd.	LED LE843 WW 6L14-XHD2 24V/50mA COF8DY (5/1)	843mm	T5 HE, 850mm, 21W	1130	7.6	148	92
tbd.	LED LE843 WW 6L14-XHD2 24V/60mA COF8DY (5/1)	843mm	-	1350	9.6	141	92
91450682	LED LE843 WW 6L14-XHD2 24V/70mA COF8DY (5/1)	843mm	-	1510	10.2	148	92
tbd.	LED LE843 WW 6L14-XHD2 24V/80mA COF8DY (5/1)	843mm	T5 HO, 850mm, 39W	1790	12.1	148	92
tbd.	LED LE843 WW 6L14-XHD2 24V/100mA COF8DY (5/1)	843mm	-	2180	15.3	143	92
tbd.	LED LE843 WW 6L14-XHD2 24V/120mA COF8DY (5/1)	843mm	-	2630	18.4	143	92
tbd.	LED LE1030 WW 7L14-XHD2 24V/40mA COF8DY	1030mm	-	1150	7.9	146	92
tbd.	LED LE1030 WW 7L14-XHD2 24V/50mA COF8DY	1030mm	-	1400	9.4	148	92
tbd.	LED LE1030 WW 7L14-XHD2 24V/60mA COF8DY	1030mm	-	1670	11.8	142	92
tbd.	LED LE1030 WW 7L14-XHD2 24V/70mA COF8DY	1030mm	-	1860	12.6	148	92
tbd.	LED LE1030 WW 7L14-XHD2 24V/80mA COF8DY	1030mm	-	2210	14.9	148	92
91450658	LED LE1030 WW 7L14-XHD2 24V/100mA COF8DY	1030mm	-	2690	18.9	143	92
91450647	LED LE1030 WW 7L14-XHD2 24V/120mA COF8DY	1030mm	-	3250	23.3	139	92
tbd.	LED LE1124 WW 8L14-XHD2 24V/40mA COF8DY (7/1)	1124mm	-	1260	8.7	146	92
tbd.	LED LE1124 WW 8L14-XHD2 24V/50mA COF8DY (7/1)	1124mm	-	1530	10.3	148	92
tbd.	LED LE1124 WW 8L14-XHD2 24V/60mA COF8DY (7/1)	1124mm	T5 HE, 1150mm, 28W	1830	12.9	142	92
tbd.	LED LE1124 WW 8L14-XHD2 24V/70mA COF8DY (7/1)	1124mm	-	2040	13.8	148	92
tbd.	LED LE1124 WW 8L14-XHD2 24V/80mA COF8DY (7/1)	1124mm	-	2420	16.4	148	92
tbd.	LED LE1124 WW 8L14-XHD2 24V/100mA COF8DY (7/1)	1124mm	T5 HO, 1150mm, 54W	2950	21.1	139	92
tbd.	LED LE1124 WW 8L14-XHD2 24V/120mA COF8DY (7/1)	1124mm	-	3560	25.5	140	92
tbd.	LED LE1170 WW 8L14-XHD2 24V/40mA COF8DY	1170mm	-	1320	9.0	147	92
tbd.	LED LE1170 WW 8L14-XHD2 24V/50mA COF8DY	1170mm	-	1600	10.8	148	92
91450618	LED LE1170 WW 8L14-XHD2 24V/60mA COF8DY	1170mm	T8, 1200mm, 36W	1910	13.5	142	92
tbd.	LED LE1170 WW 8L14-XHD2 24V/70mA COF8DY	1170mm	-	2130	14.4	148	92
91450529	LED LE1170 WW 8L14-XHD2 24V/80mA COF8DY	1170mm	-	2530	17.1	148	92
91450624	LED LE1170 WW 8L14-XHD2 24V/100mA COF8DY	1170mm	-	3080	22.1	140	92
91450620	LED LE1170 WW 8L14-XHD2 24V/120mA COF8DY	1170mm	-	3720	26.7	140	92
tbd.	LED LE1450 WW 10L14-XHD2 24V/40mA COF8DY	1450mm	-	1650	11.2	147	92
tbd.	LED LE1450 WW 10L14-XHD2 24V/50mA COF8DY	1450mm	T5 HE (ECO), 1450mm, 35W (32W)	2000	13.5	148	92
tbd.	LED LE1450 WW 10L14-XHD2 24V/60mA COF8DY	1450mm	-	2380	16.9	141	92
91450621	LED LE1450 WW 10L14-XHD2 24V/70mA COF8DY	1450mm	T5 HO (ECO), 1450mm, 49W (45W)	2660	18.0	148	92
91450625	LED LE1450 WW 10L14-XHD2 24V/80mA COF8DY	1450mm	T8, 1500mm, 58W	3160	21.8	145	92
91450623	LED LE1450 WW 10L14-XHD2 24V/100mA COF8DY	1450mm	T5 HO (ECO), 1450mm, 80W (73W)	3850	27.6	140	92
tbd.	LED LE1450 WW 10L14-XHD2 24V/120mA COF8DY	1450mm	-	4650	33.3	140	92

Packaging: 12 pieces/carton, 360 pieces./pallet

DATASHEET - RE-FIT LINEAR PROFILE LUMINAIRES

- *Measurement with laboratory power supply
- All typical values for $T_a=25^{\circ}\text{C} \pm 2^{\circ}\text{C}$
- Luminous flux min. value = typ. value - 20%
- Tolerance mechanical dimensions $\pm 1\text{mm}$
- Tolerance electrical data $\pm 15\%$
- Tolerance optical data $\pm 15\%$
- Tolerance min. value CRI +1/-1
- Energy efficiency class (valid for light source): up to 80mA=C, from 100mA=D

OPTICAL PROPERTIES (LUMINAIRE)



OTHER LIGHT COLORS AVAILABLE ON REQUEST:

Code	DL	CW	WW	PC
Color	Daylight	Cool White	Warm White	Pasta & Cheese
CCT	6500K	5000K	3000K	2700K

DATASHEET - RE-FIT LINEAR PROFILE LUMINAIRES

CONVERTER (ON/OFF) INCL. FEEDER CABLE



- On/Off operation
- Driver dimensions 35W: 230 x 30 x 21mm
- Driver dimensions 60W: 280 x 30 x 21mm
- Driver dimensions 100W: 360 x 30 x 21mm
- DALI on request
- Magnetic mounting set on request

ORDERING INFORMATION

Type	Item no.
CONVERTER (built-in) 35W incl. 1x feeder straight CINCH 530mm	89601382
CONVERTER (built-in) 60W incl. 2x feeder straight CINCH 530mm	89601383
CONVERTER (built-in) 100W incl. 2x feeder straight CINCH 530mm	89601384

FEEDER CABLE (INDIVIDUAL ITEM)



- Power supply cable for connecting a linear LED luminaire with cinch to a driver
- The power supply cable is already connected to the driver

ORDERING INFORMATION

Length	Weight	Type	Item no.
530mm	30g	LED Feeder angled CINCH 530	89601612

BRIDGE CABLE



- Bridge to connect two luminaires with Cinch

ORDERING INFORMATION - Bridge

Length	Weight	Type	Item no.
200mm	9g	LED Bridge angled CINCH 200	89601625

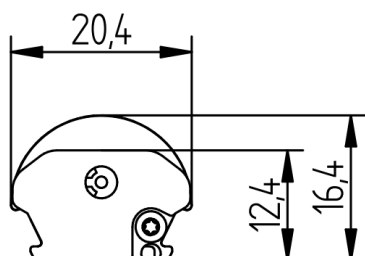
DATASHEET - RE-FIT LINEAR PROFILE LUMINAIRES

LUMINAIRE



LUMINAIRE DESCRIPTION

- Suitable for the retrofitting of fluorescent tubes or LED tubes
- Ready-to-connect solution available, thanks to Cinch Connection System
- High operational performance due to directional lighting & integrated heat dissipation
- Excellent product illumination thanks to the combination of SMD LEDs and innovative optics
- Safe-use operation due to safety extra-low voltage (SELV)
- Simple installation with application of magnetic fixing plates
- Heat sink profile made of extruded aluminum
- LED modules protected against moisture & dust by conformal coating
- End caps made of PBT
- Cover made of PMMA
- Dimming capability



TECHNICAL DATA

Supply voltage	24VDC
Ambient temperature t_a	-30 ... +30 °C
Max. surface temperature profile t_c	60 °C
Type of protection	IP54
Protection class	III
Risk group [EN 62471:2008]	0



LIFETIME

70000h (L80 B10)

STANDARDS

- EN 60598-1
- EN 60598-2-1
- EN 62031
- EN 62471
- EN 60335-1, EN 60335-2-24, EN 60335-2-89
- Eco Design 2019/2020 (SLR)
- Energy Labeling 2019/2015 (ELR)
- PRP/HACCP (Food Safety)
- RoHS/Reach
- ENEC, UL

TEMPERATURE BEHAVIOR

Operating temperature (operation, no defects)	t_a	-30 ... +30 °C
Storage temperature	t_s	-30 ... +60 °C
Temperature cooling profile ¹²	t_c	-30 ... +60 °C

¹ Values apply to operation at 100% output, natural convection.

² If the maximum temperature limits are exceeded, the lifetime of the module will be greatly reduced or the module may be destroyed. The t_c point temperature at the profile of the light engine should be measured in the thermally stable state and under operating conditions by means of a temperature sensor or temperaturesensitive sticker in accordance with EN60598-1. The entire profile can be used as the t_c point.

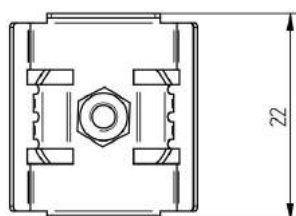
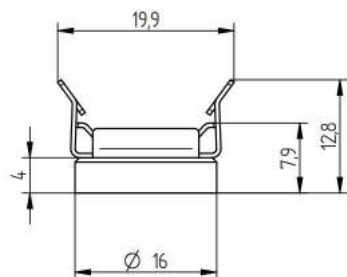


Note

- Installation should only be conducted by a licensed electrician.
- Reversing the polarity can damage the product!
- Make sure the converter has been switched off prior to connecting the light engine. If this is not observed, the light engine may be damaged!
- Connection or operation is only permitted when using the specified converters. Higher voltages result in damage to or failure of the light engine.
- The user is responsible for correct selection of illumination intensity. Excessive illumination intensity may lead to greying or colour changes of displayed products.
- Lumitech™ accessories must be used. Accessories (e.g. cables) from other manufacturers can lead to failures and damage. The use of these parts will void any warranty claim!
- Luminaires must not be installed next to a cooling or heating outlet!

DATASHEET - RE-FIT LINEAR PROFILE LUMINAIRES

PLATE METAL 0° MAGNETIC



- Mounting holder with 0° angle & magnet
- Material: Metal

TECHNICAL DATA

Ambient temperature in installed condition	-30 ... +80 °C
Ambient temperature during assembly of the luminaire or profile	+10 ... +30 °C
Dimensions L x W x H	22 x 19.9 x 12.8mm
Weight	0.009kg

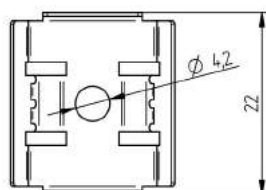
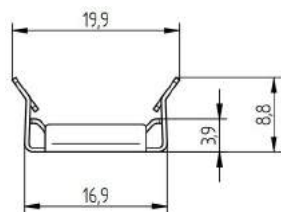
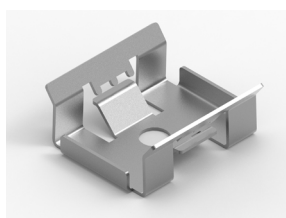
RoHS

ORDERING INFORMATION

Type	Item no.
LED FIXING PLATE METAL 0° Magnetic	88167382

Packaging: 50 pcs./pack, 1000 pcs./box

PLATE METAL 0°



- Mounting holder with 0° angle
- Material: Metal
- Assembly: By means of self-tapping sheet metal screws

TECHNICAL DATA

Ambient temperature in installed condition	-30 ... +80 °C
Ambient temperature during assembly of the luminaire or profile	+10 ... +30 °C
Dimensions L x W x H	22 x 19.9 x 8.8mm
Weight	0.002kg

RoHS

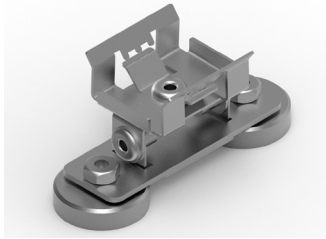
ORDERING INFORMATION

Type	Item no.
LED FIXING PLATE METAL 0°	88167376

Packaging: 50 pcs./pack, 1000 pcs./box

DATASHEET - RE-FIT LINEAR PROFILE LUMINAIRES

PLATE METAL ADJUSTABLE MAGNETIC



- Magnetic mounting plate
- Material: Metal
- Angle adjustable from -60° to $+60^{\circ}$

TECHNICAL DATA

Ambient temperature in installed condition	-30 ... +80 °C
Ambient temperature during assembly of the luminaire or profile	+10 ... +30 °C
Dimensions L x W x H	49 x 19.9 x 22.8mm
Weight	0.024kg

RoHS

ORDERING INFORMATION

Type	Item no.
LED MAGNETIC PLATE METAL - adjustable	88167385

Packaging: 100 pcs./box

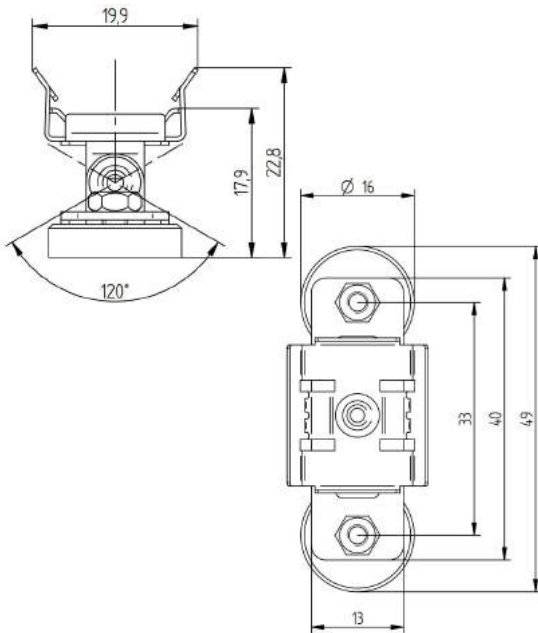


PLATE METAL ADJUSTABLE



- Mounting plate
- Material: Metal
- Angle adjustable from -60° to $+60^{\circ}$

TECHNICAL DATA

Ambient temperature in installed condition	-30 ... +80 °C
Ambient temperature during assembly of the luminaire or profile	+10 ... +30 °C
Dimensions L x W x H	40 x 19 x 19mm
Weight	0.010kg

RoHS

ORDERING INFORMATION

Type	Item no.
LED FIXING PLATE METAL - adjustable	88167384

Packaging: 1000 pcs./box

